



NEW *from* Gendex!

Introducing The Latest In Cone Beam 3-D Imaging.

- ☑ Advanced 3-D Diagnostic Capabilities
- ☑ Perfect For Implantology
- ☑ Improved Practice Workflow

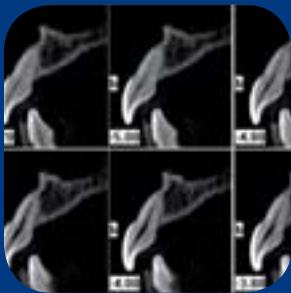
- ☑ Cone Beam 3-D Imaging Systems
 - Panoramic X-ray Systems
 - Intraoral X-ray Systems
 - Digital Intraoral Sensors
 - Digital X-ray Phosphor Plates
 - Intraoral Cameras
 - Imaging Software



Seated patient positioning to minimize movement



Immediate 3-D reconstruction of anatomy



Distortion-free, crosssectional slices of maxilla and mandible



Introducing the GXCB-500 – The Latest In Cone Beam 3-D Dental Imaging

Gendex enters a new dimension in dental imaging with the GXCB-500, powered by i-CAT®, the industry-leading technology and robust software for 3-D imaging. Featuring easy-to-use, push button controls and seated patient positioning to minimize movement, the GXCB-500 offers dental professionals a unique 'medium field of view' of up to 14 cm diameter x 8 cm height – providing immediate diagnostic information on the patient to precisely plan implant treatment with exact measurements prior to surgery.

Advanced 3-D Diagnostic Capabilities

- Anatomically accurate 3-D imaging of critical anatomies
- No distortion or magnification
- Cross-sectional slices of desired location in the maxilla or mandible

Perfect For Implantology

- 8 cm x 8 cm field of view includes both arches in Standard Scan mode
- 14 cm x 8 cm field of view captures maxilla and both TM joints in Extended Diameter Scan (EDS) mode
- Nerve marking estimation to easily identify nerve canal
- Plus, traditional digital panoramic images

Improved Practice Workflow

- Fast 8.9 second scan in Standard mode
- Full 3-D reconstruction in less than 20 seconds
- Under 20 megabyte file sizes
- Easily share 3-D data and images with other clinicians



- i-CAT Vision™ software features:*
- Automatic Pan Reconstruction
 - Nerve Canal Estimation
 - Practice Management Interface
 - PACS Interface
 - DICOM 3 Compatible for 3rd Party Software

GXCB-500 Technical Specifications

Focal Spot	0.5
Voxel Sizes	0.4, 0.3, 0.25, 0.2, 0.125
Type of Sensor	Amorphous Silicon Flat Panel
Size of Panel	13 x 13 cm
Line Pairs	14 lp/cm at 0.2 voxel scan at the object
Grayscale (BIT)	14 bit
Shades of Gray	16384 shades of gray
Field of View	8 cm (d) x 8 cm (h) – Standard Mode 14 cm (d) x 8 cm (h) – EDS Mode
Collimation	down to 4 cm
Scan Times	8.9 sec (0.3 and 0.4 voxel Std/EDS scans) 23 sec (0.125, 0.2 and 0.25 voxel scans)
Reconstruction Times	less than 20 sec – Standard Mode less than 95 sec – EDS Mode
File Sizes	less than 20 MB – Standard Mode less than 76 MB – EDS Mode
Software	Free i-CAT Vision™ viewing and sharing software included
Footprint	1.22 m wide x 1.17 m deep

KaVo Dental – Gendex Imaging
Via Alessandro Manzoni, 44
20095 Cusano Milanino
Milan • Italy
Tel. +39 02 6180081
Fax +39 02 61800809
www.gendex-dental.com
www.kavo.com

GENDEX
Imaging Excellence Since 1893